



Chemical Business Association



**WORKING TOGETHER WE CAN
INCREASE PERFORMANCE!**

UK COMAH STATISTICS

DECEMBER 2016

Total sites

- 879

Upper Tier sites

- 346

Lower Tier sites

- 533



CBA BREAKDOWN

DISTRIBUTORS

	2013	2014	2015	2016
Total sites	31	34	40	45
Upper Tier	11	11	12	15
Lower Tier	20	23	28	30

LOGISTIC SERVICE PROVIDERS

	2013	2014	2015	2016
Total sites	36	38	38	39
Upper Tier	25	24	25	25
Lower Tier	11	14	13	14

$$45 + 39 = 84$$

INITIAL CA Strategic Priorities

www.hse.gov.uk/comah/ca-guides.htm

On-Site / Off-site Emergency Preparedness and Response

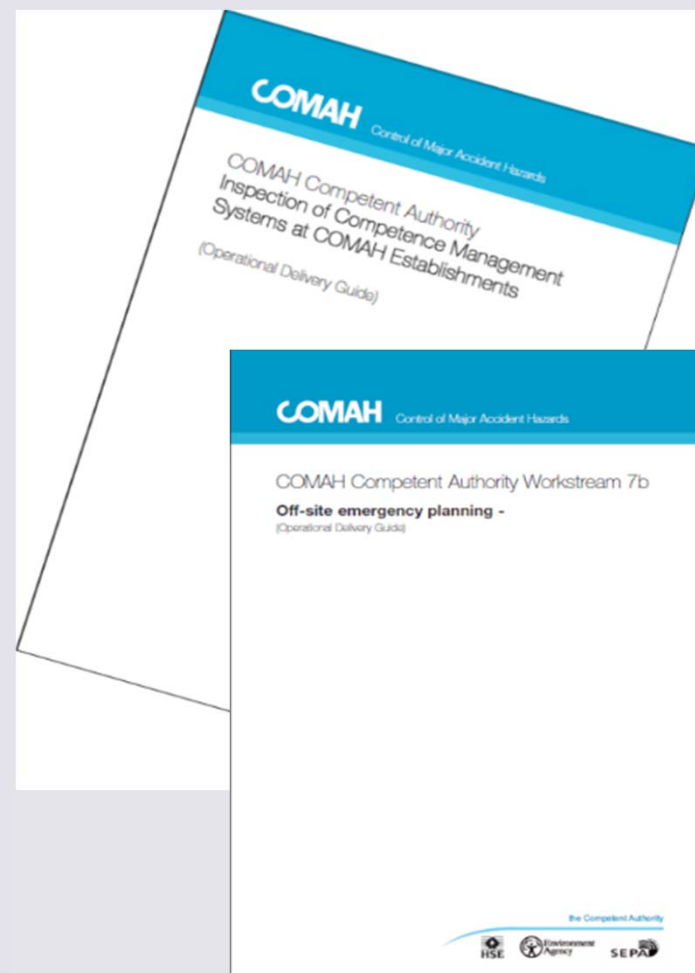
Site Performance Indicators
Post Buncefield PSLG Verification

Secondary and Tertiary containment

Competence

Overfill Protection

Ageing Plant and continued Integrity



FURTHER DELIVERY GUIDES

MAY 2015 ONWARDS

- KPI Update
 - Assessment of Key Performance Indicators During Inspection/Investigation
 - Second stage of PSPI

<http://www.hse.gov.uk/comah/hid-kpi-delivery-guide.pdf>



RECENT DELIVERY GUIDE

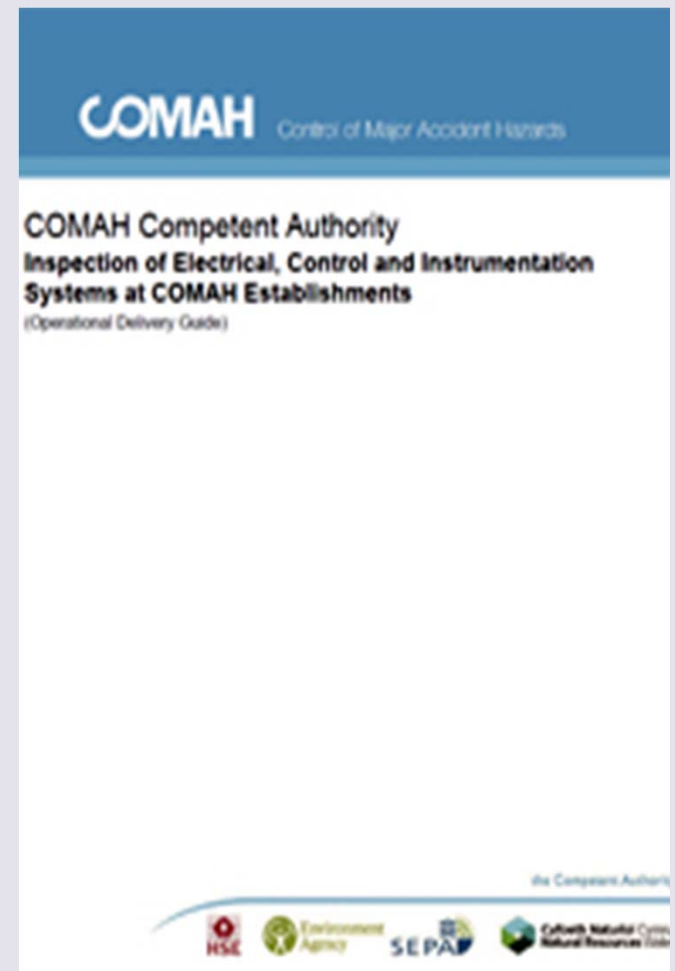
- Electrical, Control and Instrumentation (EC&I)
 - Replaces Ageing Plant EC&I aspects

<http://www.hse.gov.uk/eci/eci-delivery-guide.pdf>

Power Systems

Functional Safety

Explosive Atmospheres

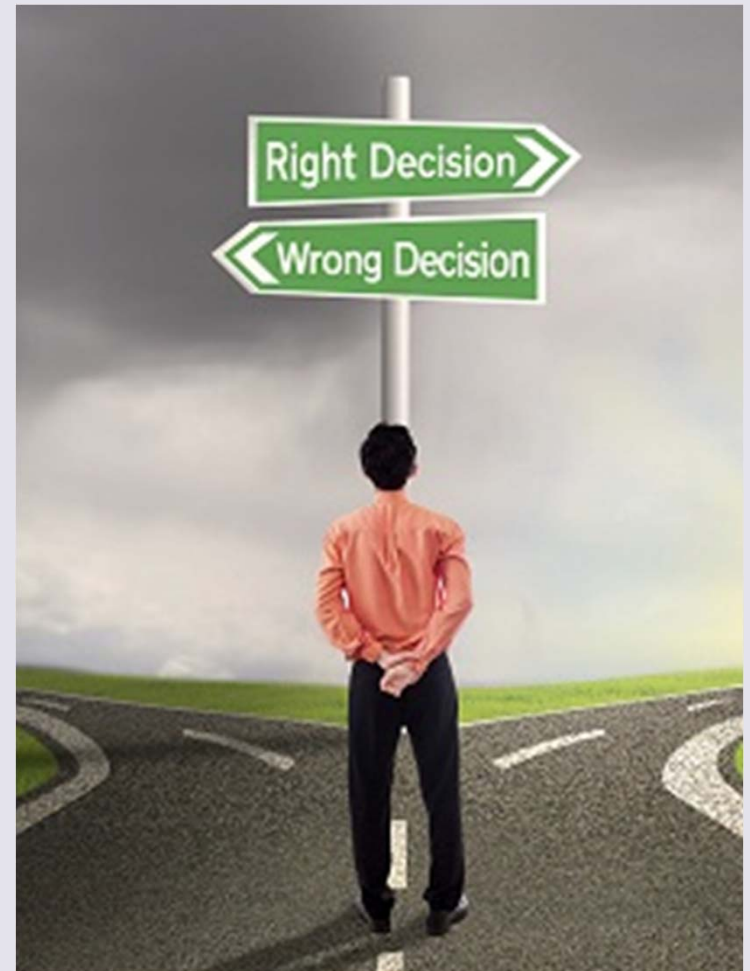


RECENT DELIVERY GUIDE

HUMAN FACTORS

- Human performance
- Process design
- Critical communications
 - Shift handover
 - PTW
- Procedures
- Competence Management

<http://www.hse.gov.uk/comah/guidance/hf-delivery-guide.pdf>



SCORING SYSTEM EXPLAINED

GENERAL SCORING PROCESS

Green

Acceptable performance

- Scored 10 - Exemplary
- Scored 20 - Good

Amber

Broadly compliant

- Scored 30

Red

Below compliance

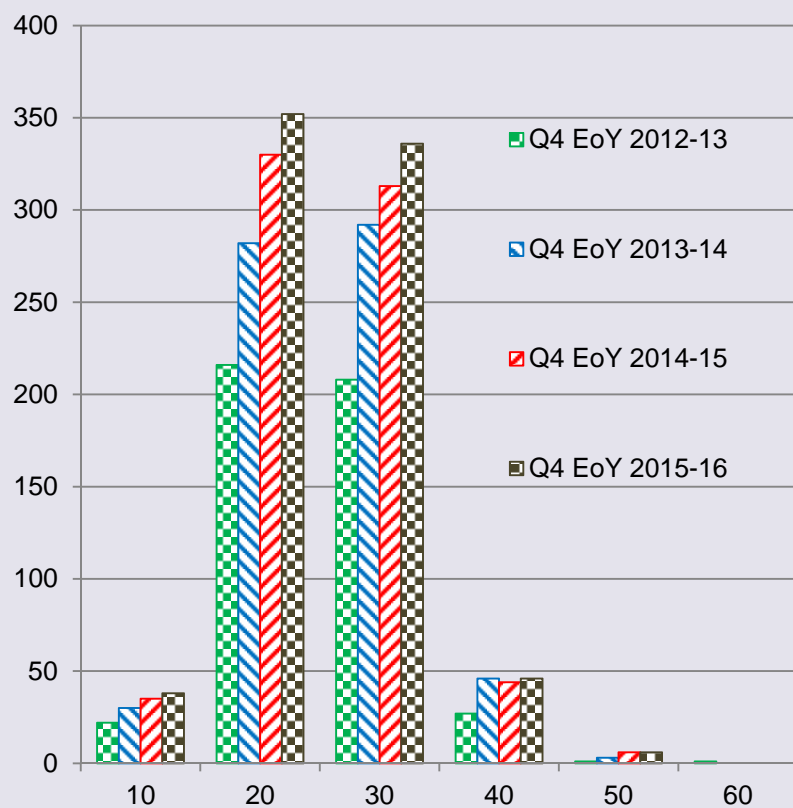
- Scored 40 – Poor
- Scored 50 – Very Poor
- Scored 60 - Unacceptable

PRIORITY SCORES (November 2016)

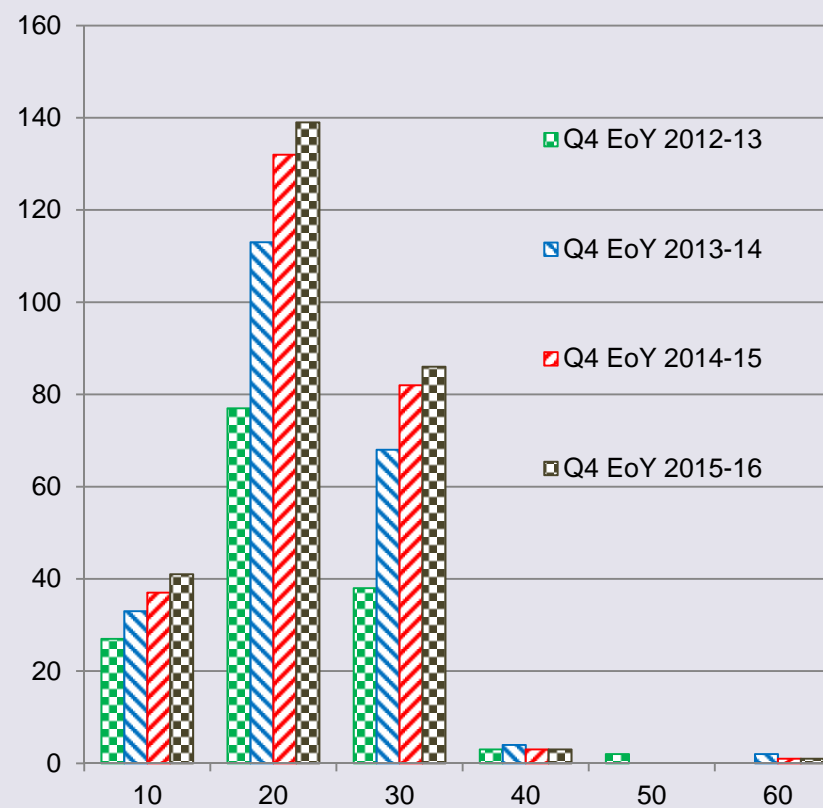
Strategic Priorities - Excluding Ageing Plant (As recorded at the last date of entry, may be over several visits)														
	Competence		Emer. Prepared Off-Site		Emer. Prepared On-Site		Key Performance Indicators (Pre May 2015)		KPI UPDATE		Overfill Protection		Second/ Tertiary Containment	
10	3	11%	3	16%	1	2%	30	50%	1	25%			1	7%
20	7	26%	13	72%	31	56%	12	20%	1	25%	1	50%	5	36%
30	16	59%	1	6%	22	40%	12	20%			1	50%	4	36%
40	1	4%	1	6%	1	2%	6	10%	2	50%			3	21%
50														
60														
	27 (28)		18 (20)		55 (55)		60 (63)		4 (3)		2 (2)		14 (12)	
	33%		22%		68%		74%		5%		2%		17%	

PRIORITY SCORE TRENDS

On Site Emergency

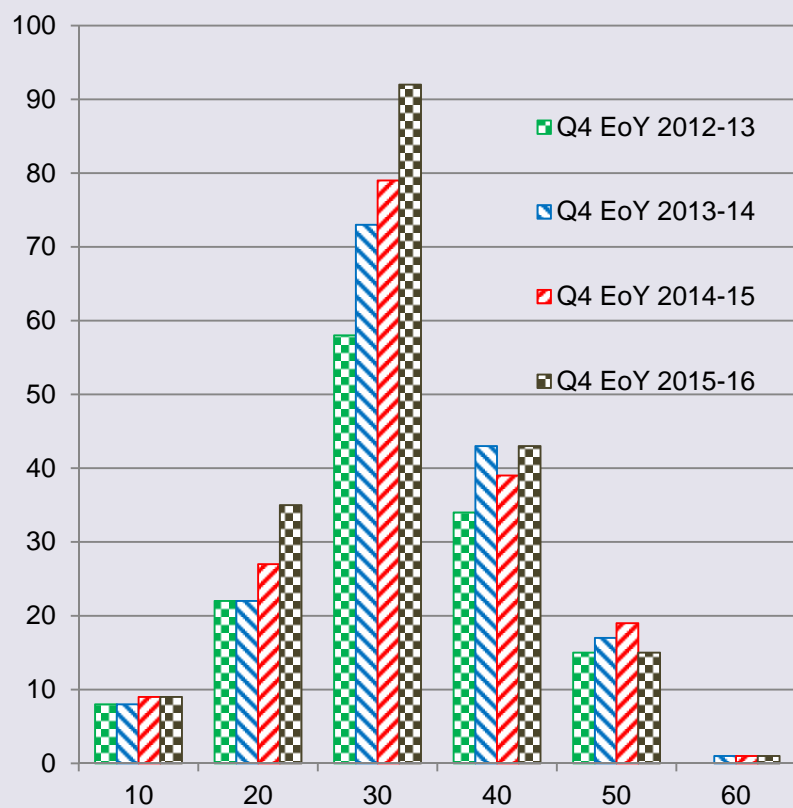


Off Site Emergency

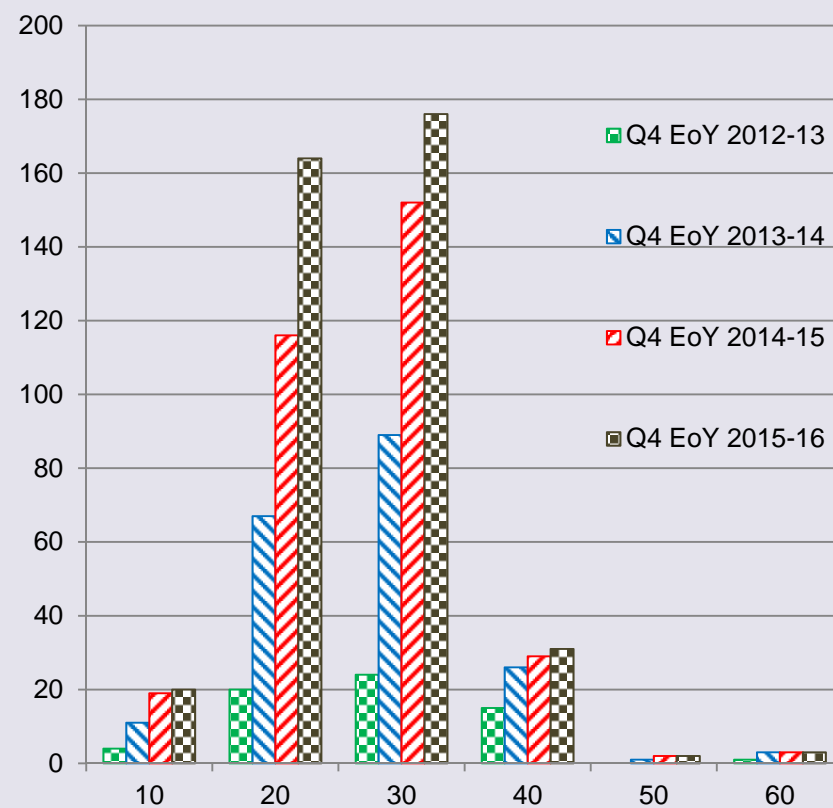


PRIORITY SCORE TRENDS

Containment



Competence



AGEING PLANT SCORES (Nov 2016)

Ageing Plant Strategic Priority (As recorded at the last date of entry, may be over several visits)												
	Ageing Plant Old score		New scores - Asset register		New scores - Primary containment		New scores - Leadership		New scores - Resources		New scores - Safety Critical Equipment	
10			3	9%			3	9%				
20			4	13%	4	12%	8	23%	12	40%	10	36%
30	5	72%	22	69%	23	68%	20	57%	16	53%	12	43%
40	1	14%	2	6%	7	20%	4	11%	2	7%	6	21%
50	1	14%	1	3%								
60												
	7 (6)		32 (34)		34 (35)		35 (36)		30 (31)		28 (30)	
	9%		40%		42%		43%		37%		35%	

AGEING PLANT SCORES

Establishment Scores at close of 2015/16 work year

Topic	Number of sites in each Ageing Plant score category						Total No. of sites scored
	10	20	30	40	50	60	
1. Leadership	14	178	219	46	7	1	465
2. Asset Register	16	164	232	47	5	1	465
3. Primary Containment	5	128	284	75	3	1	496
4. Maintenance of SCE	5	116	241	57	6	1	426
5. EC&I Inspection	6	12	33	7	1	0	59
6. EC&I Obsolescence	4	19	18	9	2	0	52
7. Resources	11	197	177	30	2	1	418
Single topic Ageing Plant score*	2	11	38	9	2	1	63

Total Number of establishments with an Ageing Plant Score = 559

PRIORITY SCORES

