

# Brainstorming Workshop on a Capacity Building Strategy for Seveso Programme Implementation in EU Neighbour Countries

26-27 March 2015, Ispra, Italy

## GIS Establishments and Mapping



Enrico Guagnini



EUROPA - eSPIRS New/Ed x

Back to search Save Discard Changes

Establishment Code: 000000 - Status: **CONFIRMED**

Identification **Details** **Location** Substances Reporting Competent Authority

### Establishment Location

This section is dedicated to the establishment location details. In order to change life-cycle, it is mandatory to either have the address OR the geographical coordinates (longitude and latitude) of the establishment.

Country \* **Italy**

Region

Province

City \*

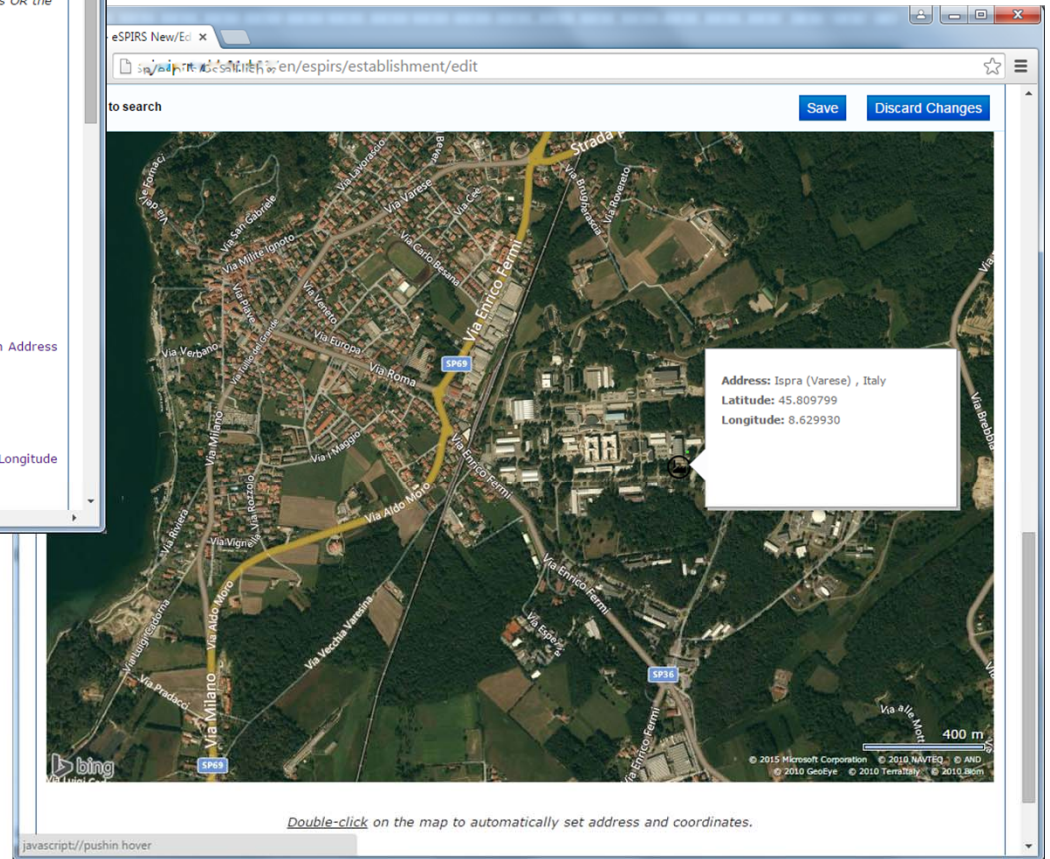
Post Code \*

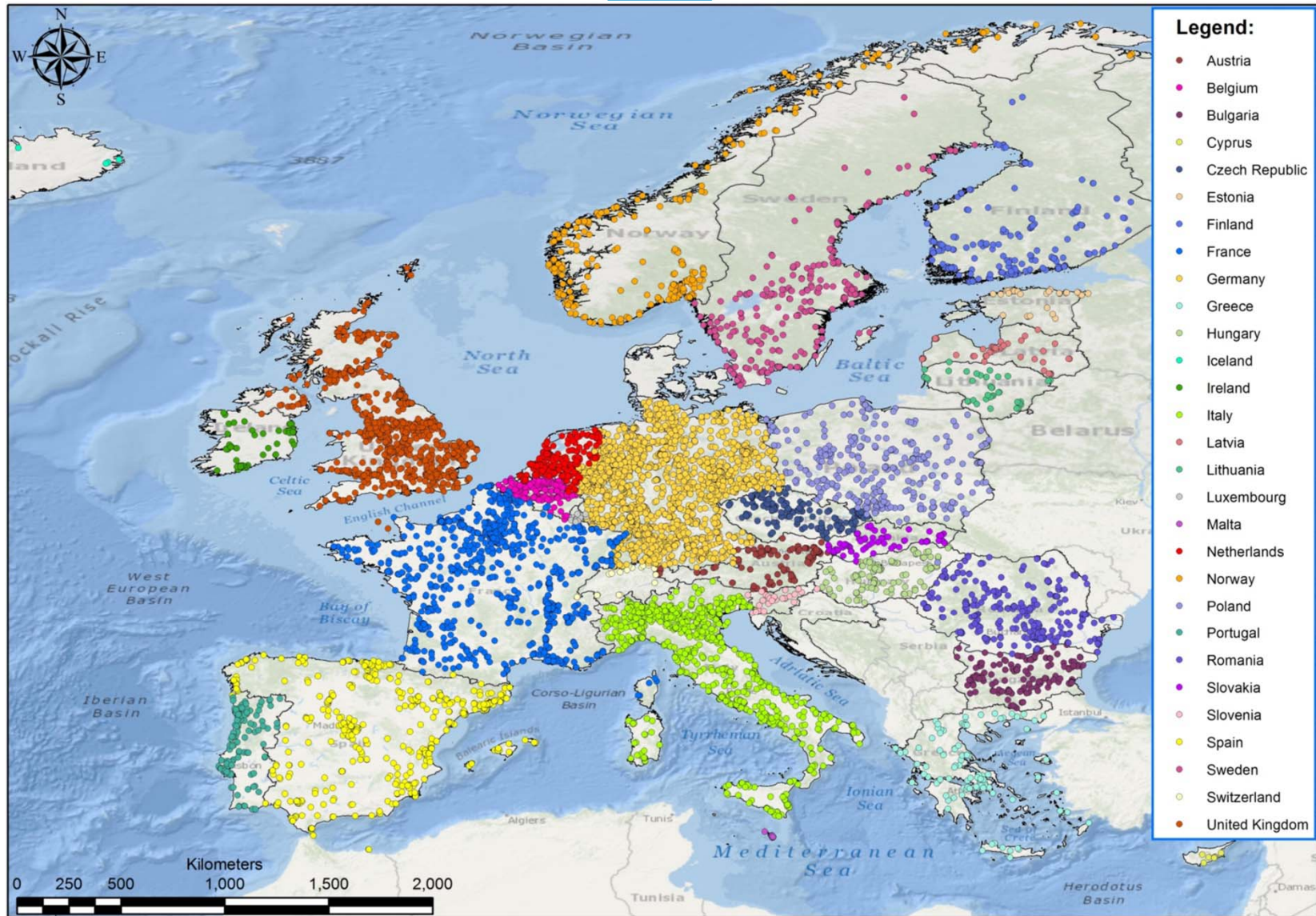
Address \*

Latitude \*  [Calculate Latitude/Longitude from Address](#)

Longitude \*  [Calculate Address from Latitude/Longitude](#)

Address Comments



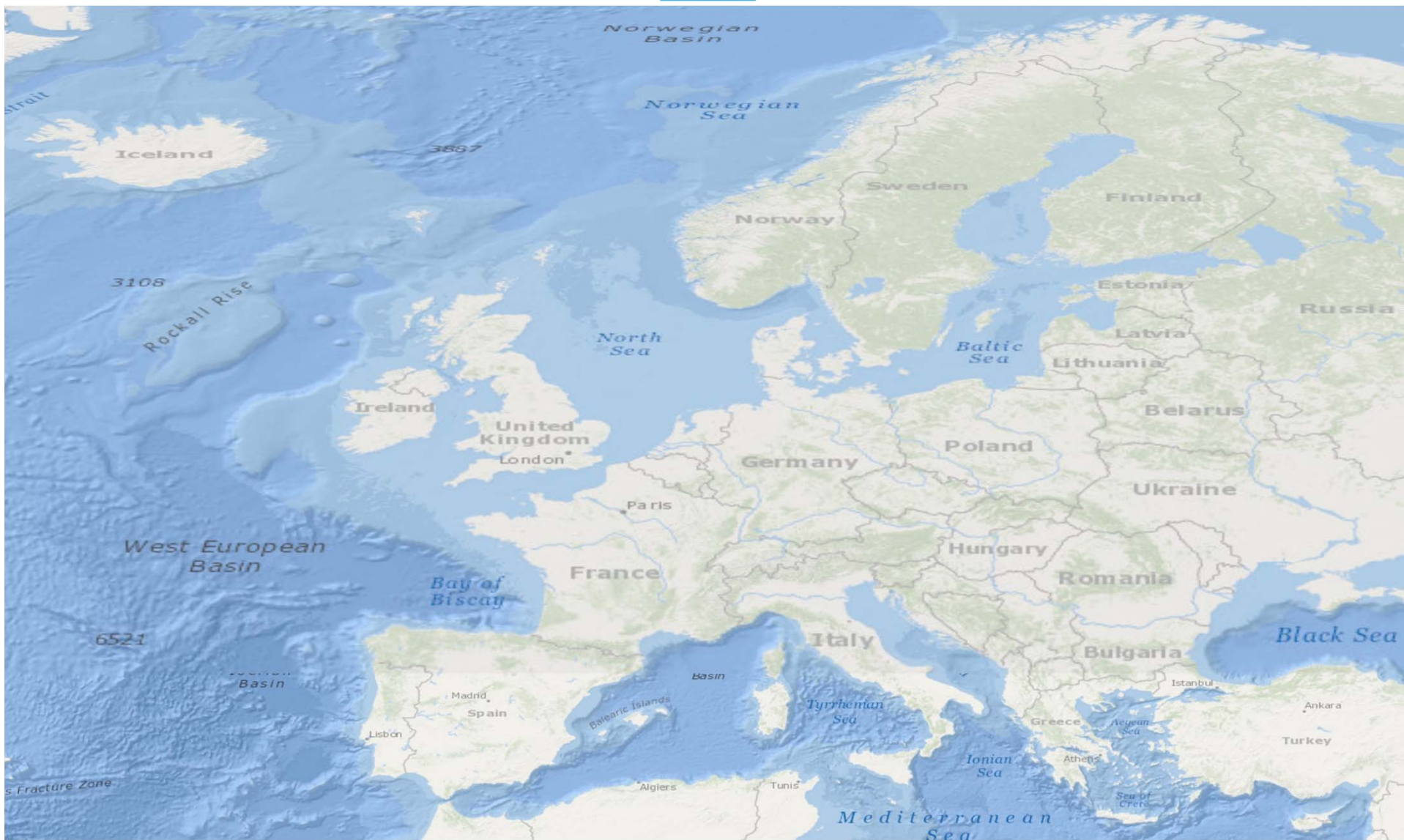


# GIS Analysis

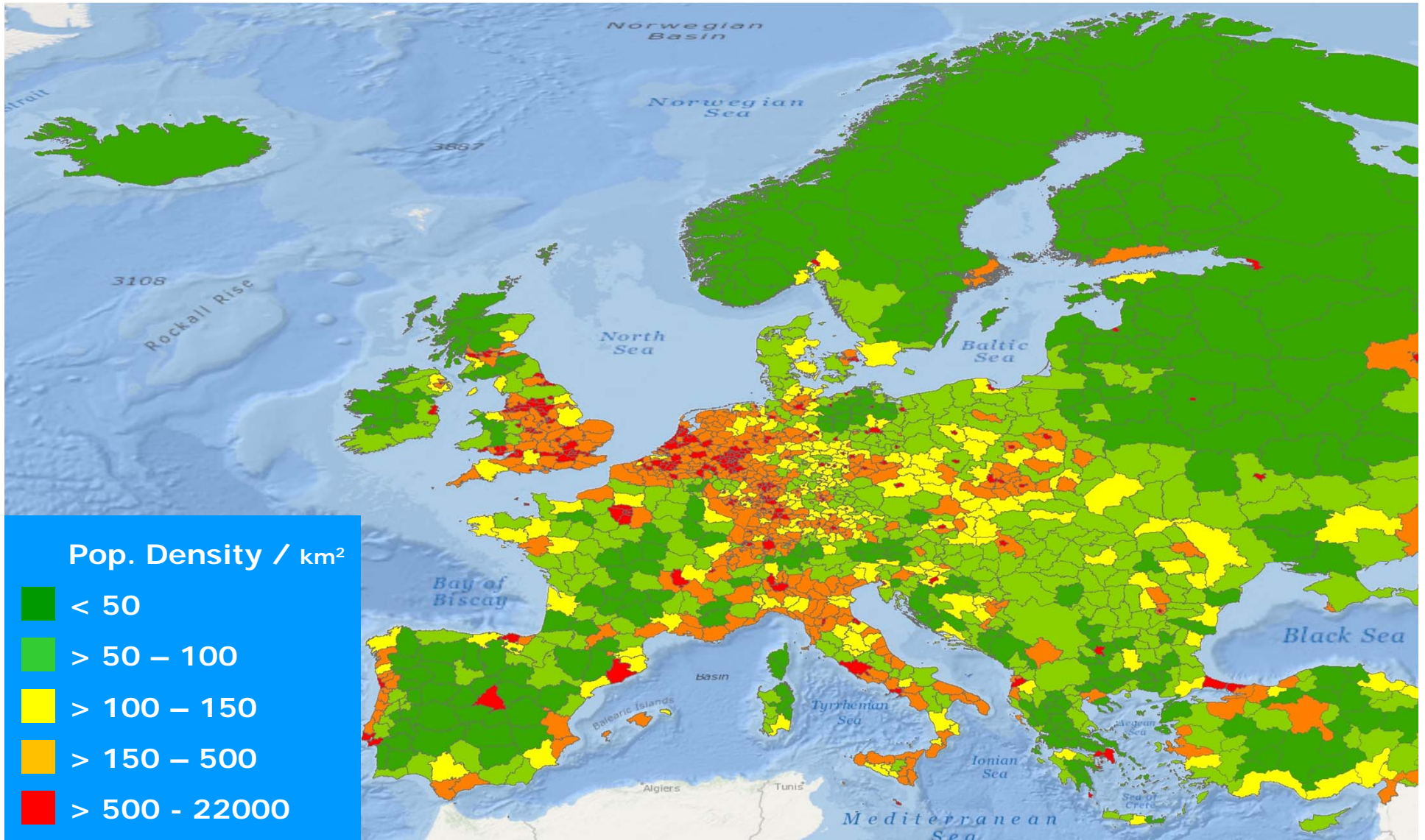
- Plant concentration
- Demographic distribution
- POI
  - Rivers
  - People high density
    - Schools
    - Hospitals
    - Sport Stadiums
    - etc.
  - Transports
  - Forest / Agriculture
  - ...
- Country Borders
  - Air
  - Water (Rivers, Lakes, Sea)
- NATECH (Proximity to Flood, Earthquakes, Landslides areas ...)
- Tech-Tech (Proximity to Dams, Power lines, Railways, Highways, ...)



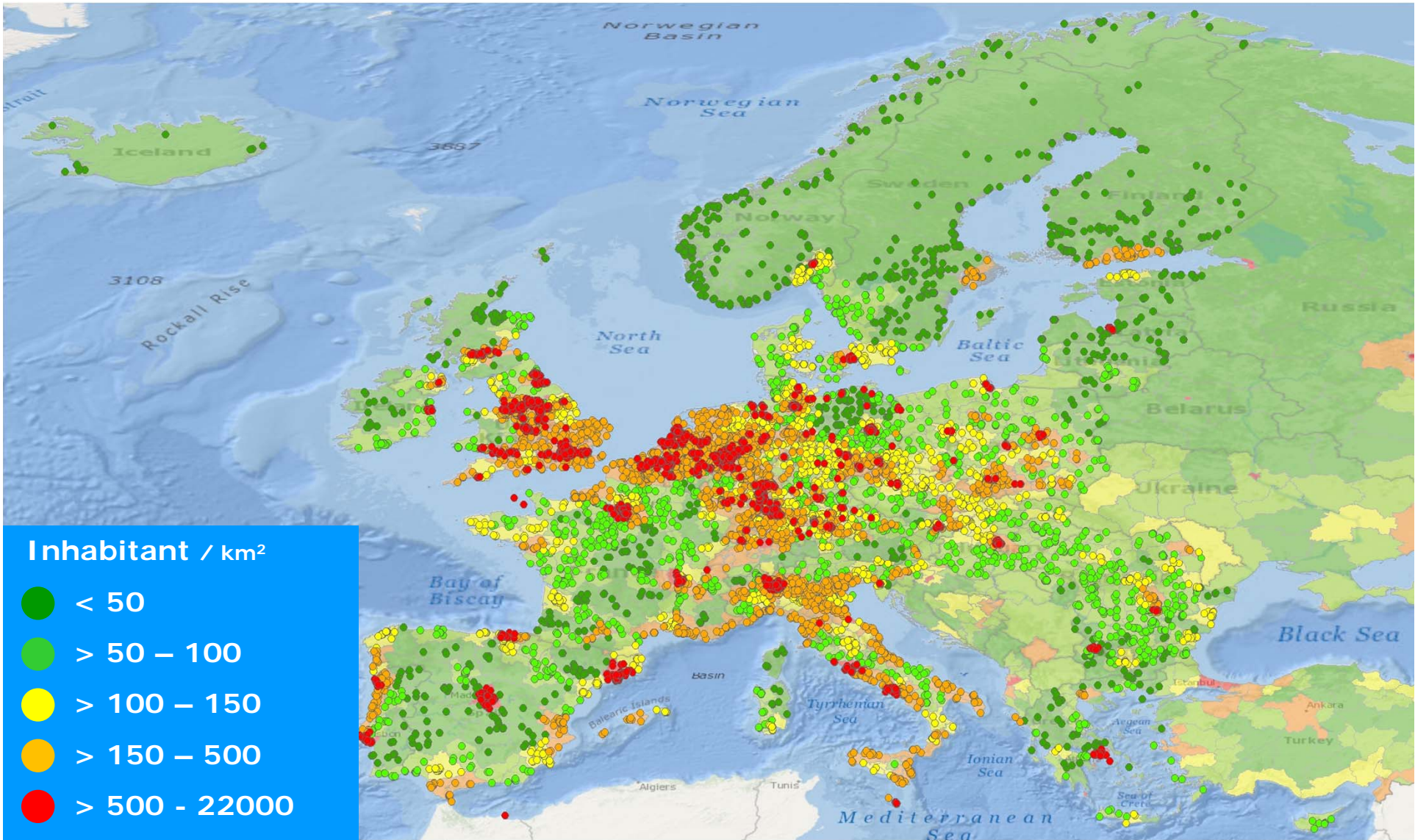
European  
Commission



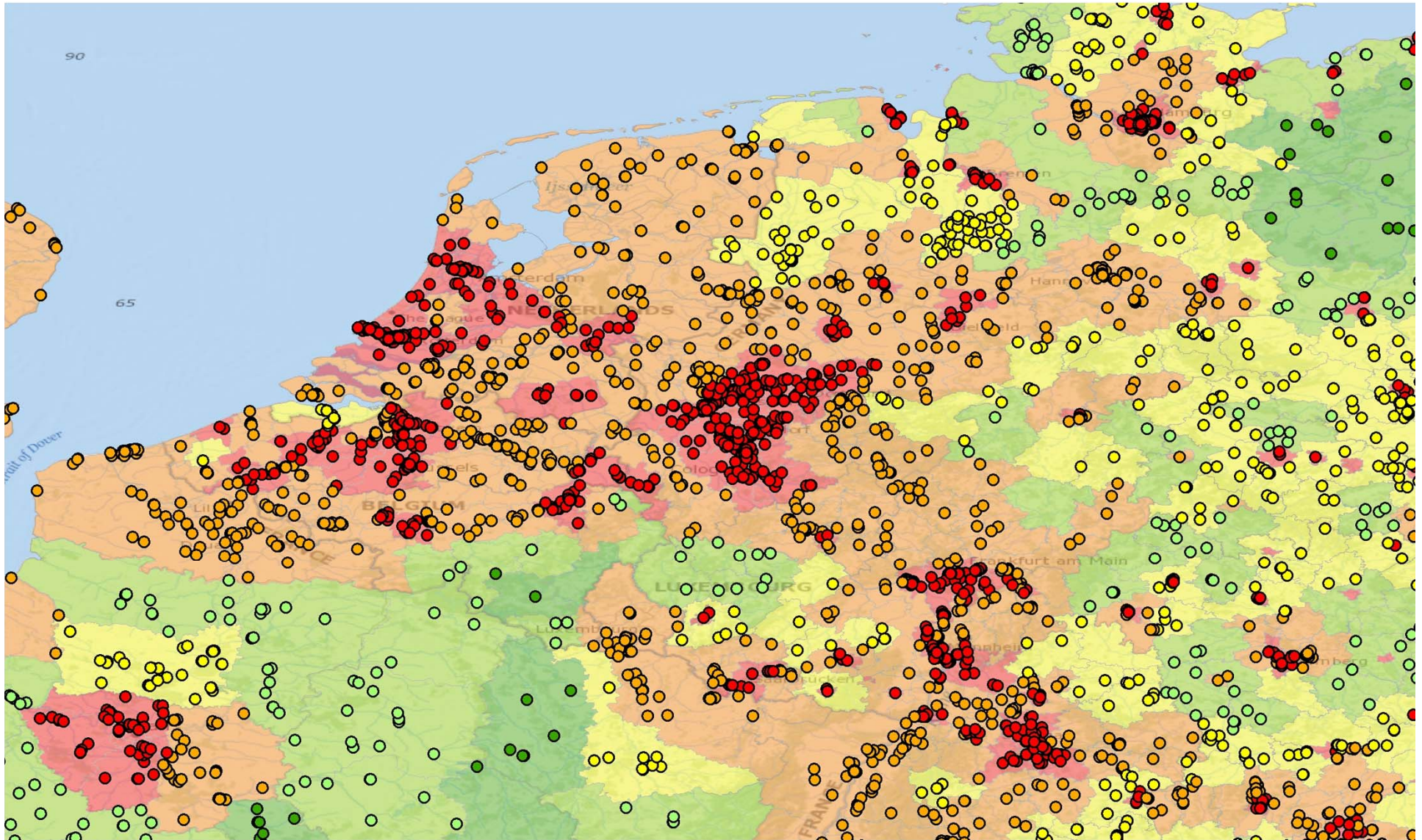
# EU-Nats 3 Pop. density



# Plant in pop. density area

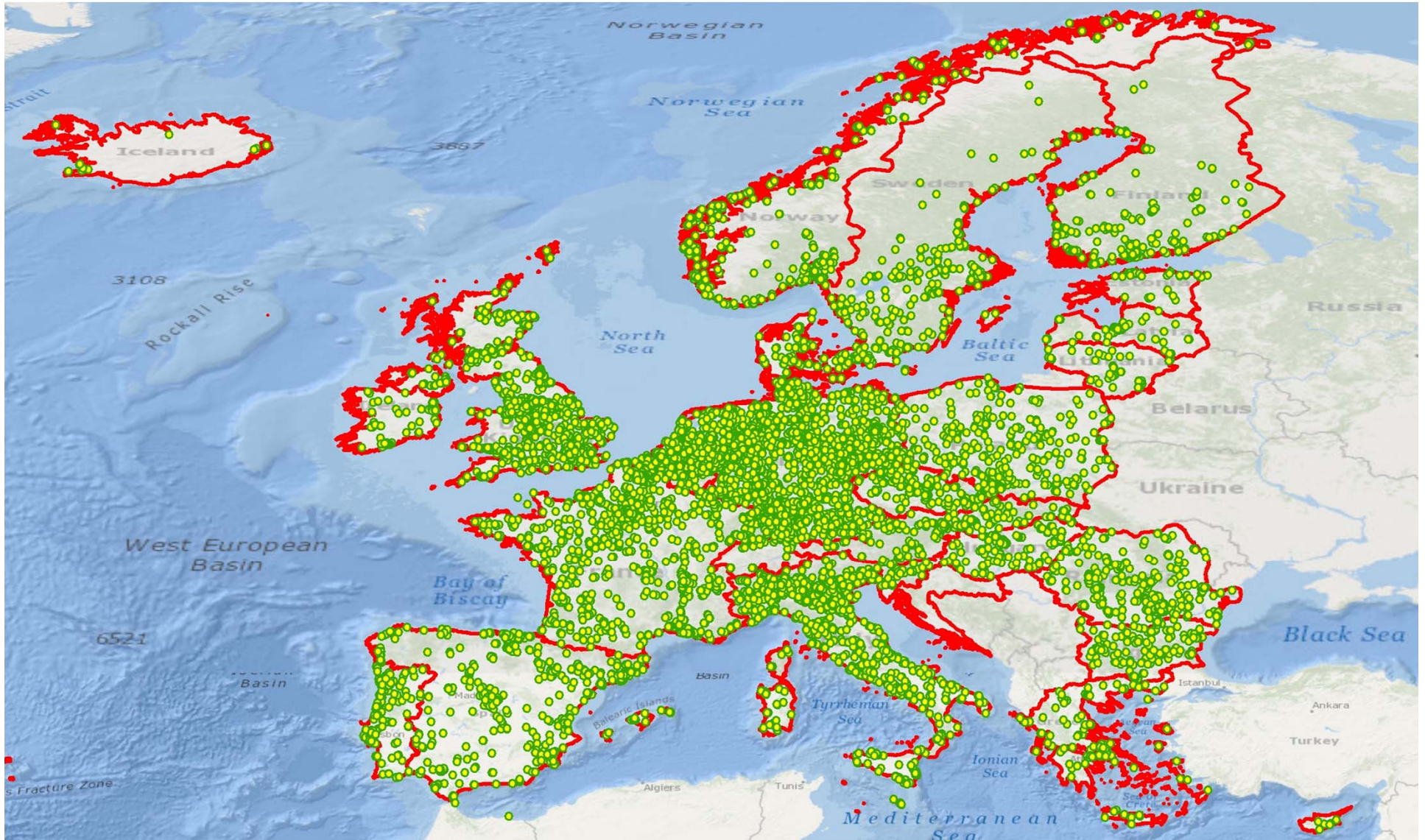


# Detail of plants in high pop. density areas





# Transboundary effects 1

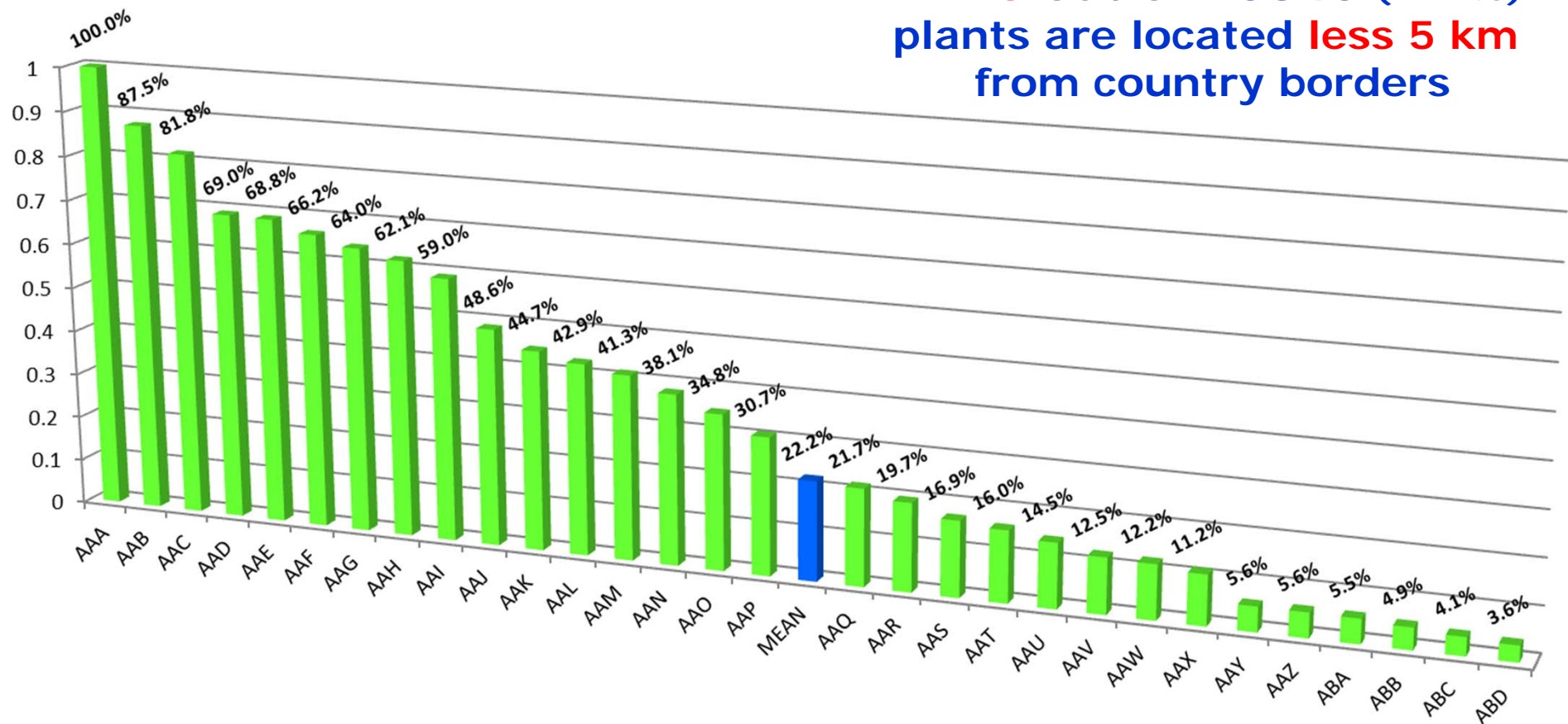


# Int / Ext Boundary 5 km border buffer

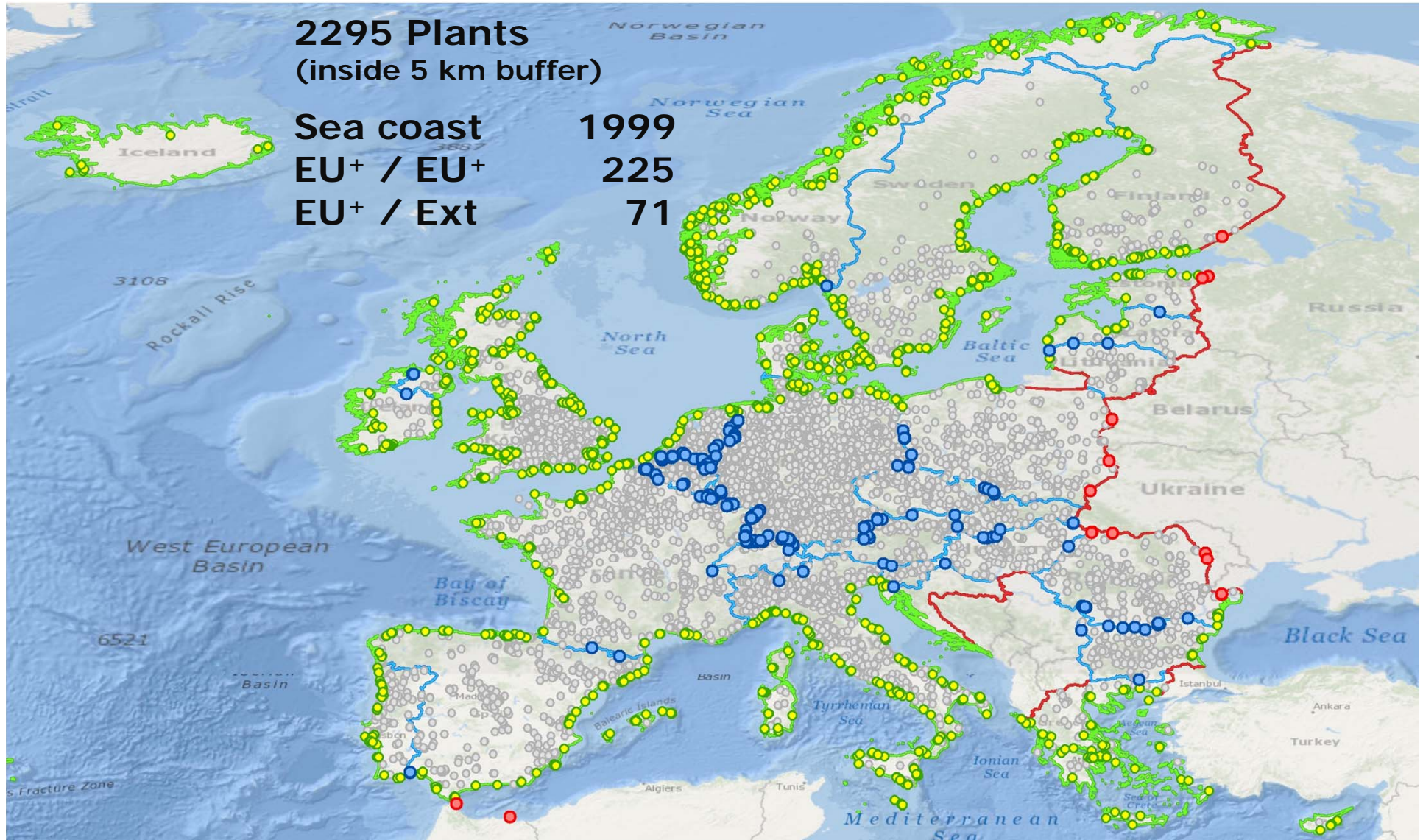


## Border analysis

**2295** out of 10340 (22.2%)  
plants are located **less 5 km**  
from country borders



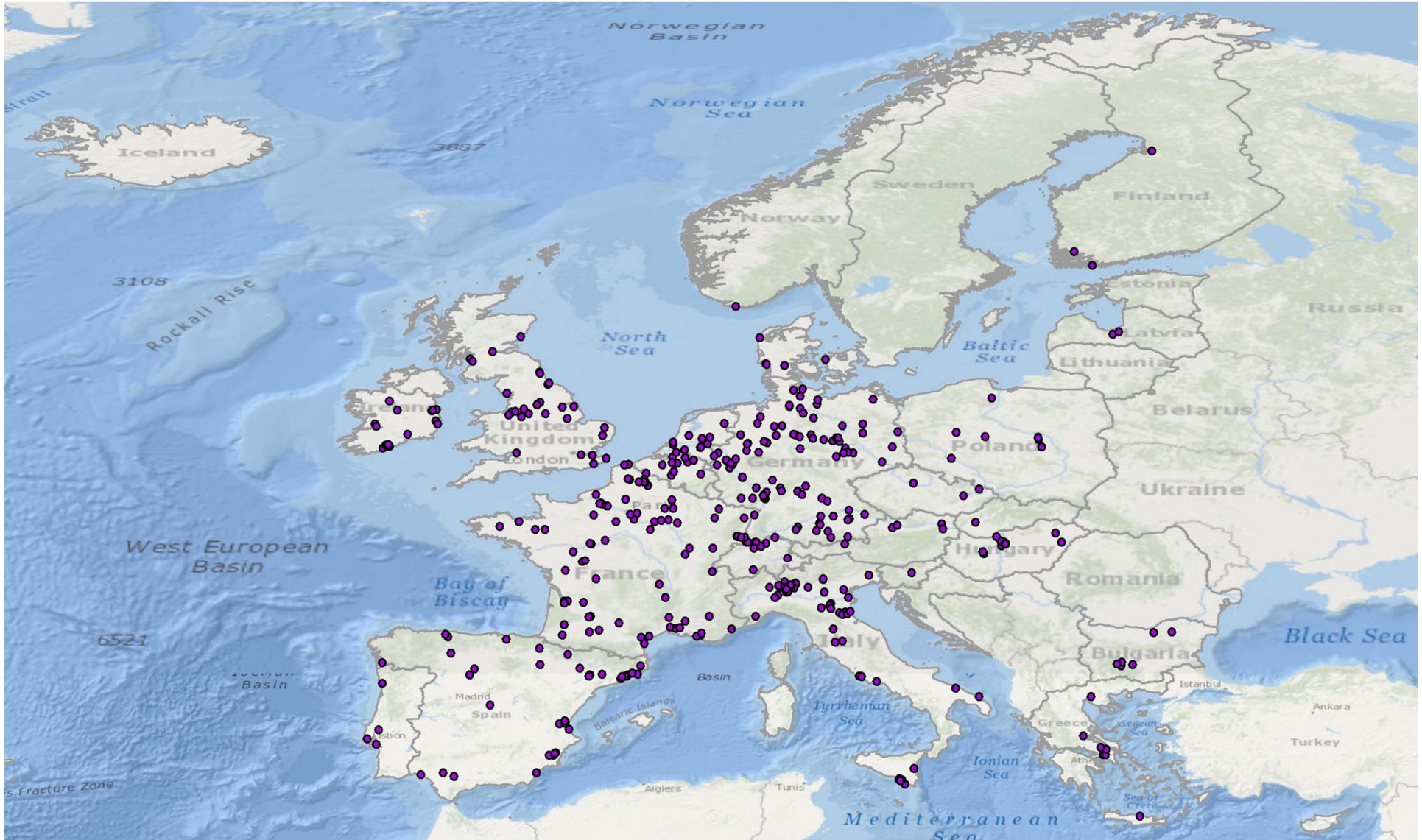
# Plants nearby the EU+ Countries borders (5km)

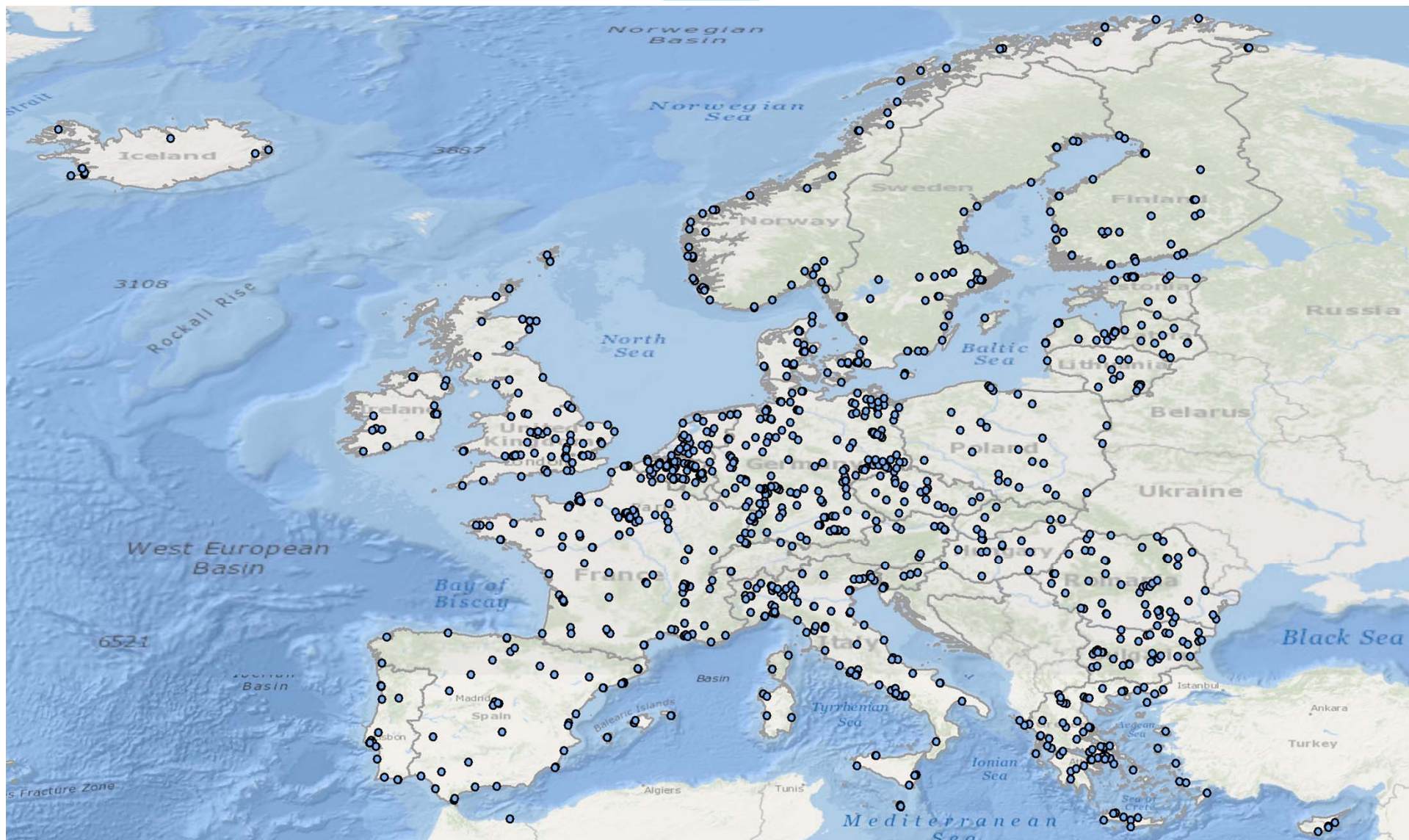


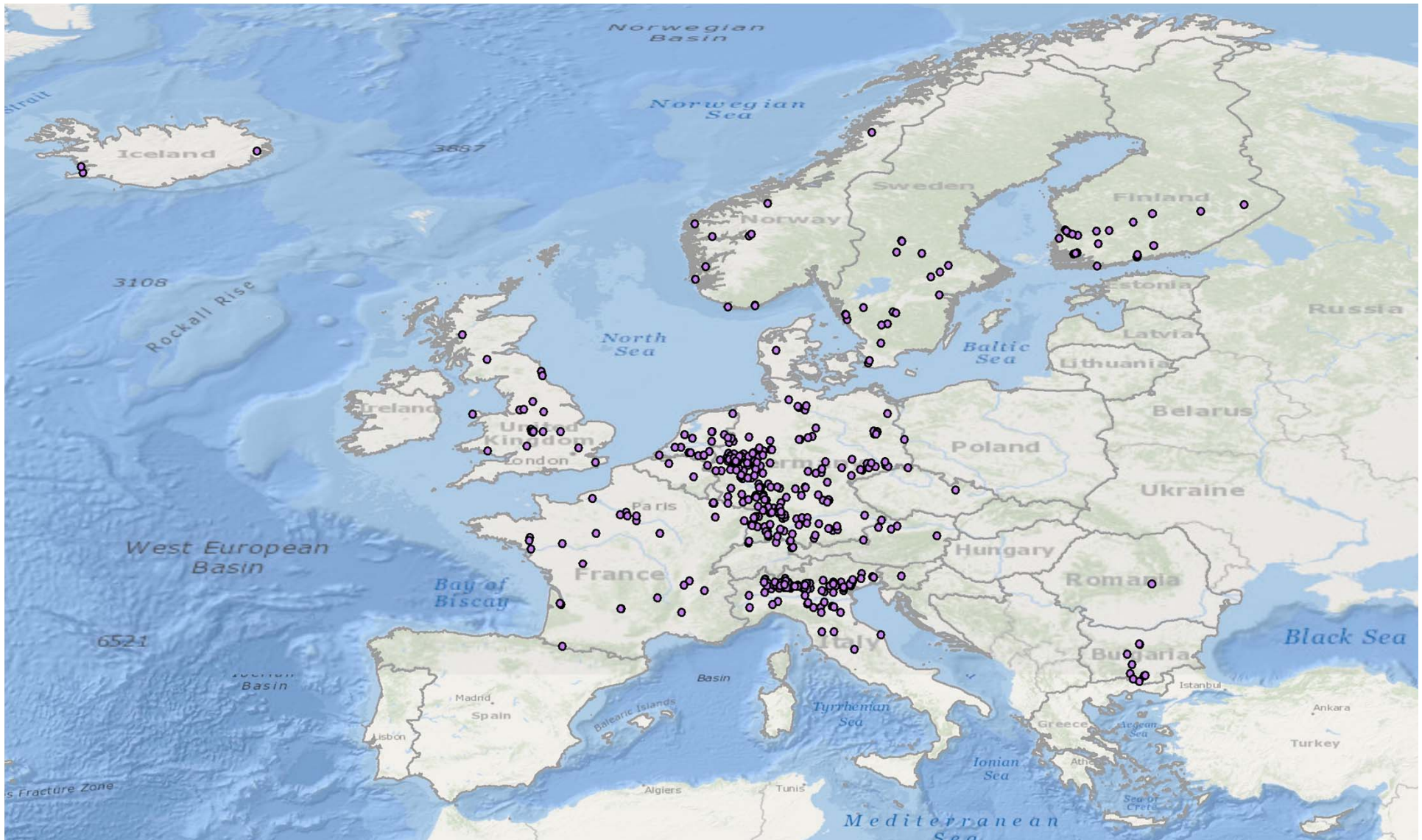
# 13 Pesticides and Pharma



N. 427







**THANK YOU FOR YOUR ATTENTION**

**IPSC - INSTITUTE FOR THE PROTECTION AND SECURITY OF THE CITIZEN  
ISPRA, ITALY**

<http://emars.jrc.ec.europa.eu/>

<http://mahb.ec.europa.eu>

<http://ipsc.jrc.ec.europa.eu/>

<http://www.jrc.ec.europa.eu/>